

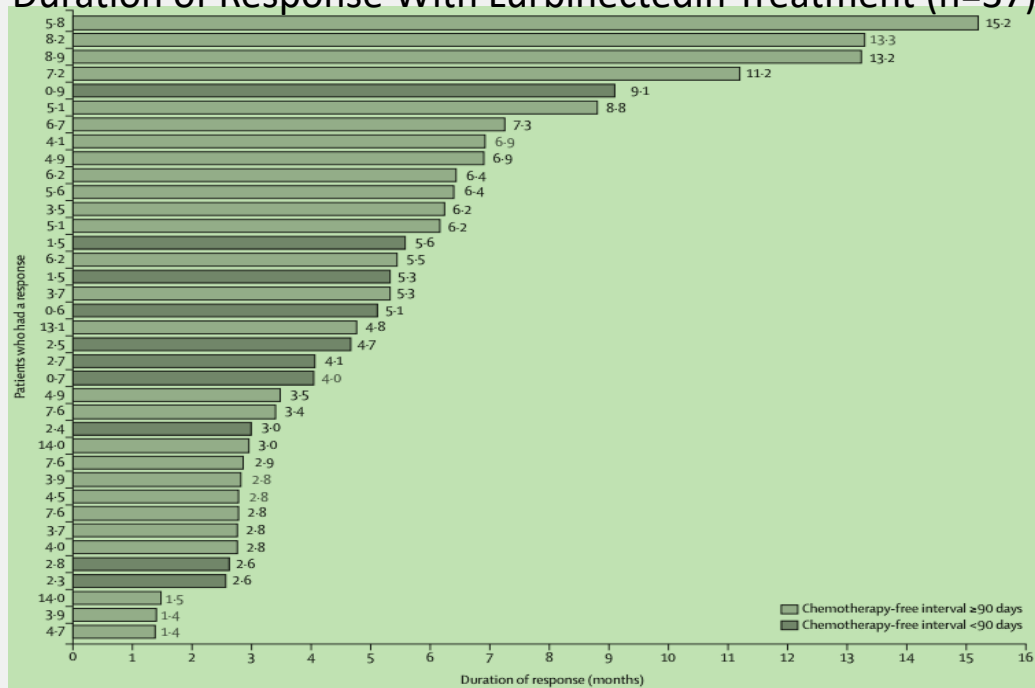
Outcomes in Patients With Small-Cell Lung Cancer Receiving Second-Line Topotecan or Lurbinectedin Treatment (N=105)

	Topotecan	Lurbinectedin
Overall response, %	24	35
DOR, months	3.3	5.3
mPFS, months	3.1	3.5
mOS, months	5.8	9.3

DOR, duration of response; mOS, median overall survival; mPFS, median progression-free survival.

HYCAMTIN® (topotecan) [prescribing information]. Novartis Pharmaceuticals Corporation. Approved 1996. Revised October 2019.
https://www.accessdata.fda.gov/drugsatfda_docs/label/2019/020671s024lbl.pdf; Trigo J, Subbiah V, Besse B, et al. Lurbinectedin as second-line treatment for patients with small-cell lung cancer: a single-arm, open-label, phase 2 basket trial. *Lancet Oncol*. 2020;21(5):645-654.
doi:10.1016/s1470-2045(20)30068-1

Duration of Response With Lurbinectedin Treatment (n=37)



Negative Results in Second-Line Treatment of Small-Cell Lung Cancer: Lurbinectedin and Topotecan

Trial Identifier (Name) and Phase	Intervention	Study Details	Outcomes (months)	
NCT02566993 (ATLANTIS) Phase 3	Lurbinectedin/doxorubicin Topotecan or CAV	N=613 SCLC Platinum resistant	mOS*: 8.6 vs 8.7 mPFS: 4.0 vs 4.0	
NCT00828139 (S0802) Phase 2	Topotecan/aflibercept Topotecan	N=189 ES-SCLC	<u>Platinum sensitive</u> mPFS*: 1.8 vs 1.3 mOS: 6.0 vs 4.6	<u>Platinum refractory</u> mPFS*: <u>1.4 vs 1.4</u> mOS: 4.6 vs 4.2
*Primary endpoint.				

CAV, cyclophosphamide, doxorubicin, and vincristine; ES, end-stage; SCLC, small-cell lung cancer.

Negative Results in Second-Line Treatment of Small-Cell Lung Cancer: Immunotherapy

Trial Identifier (Name) and Phase	Intervention	Study Details	Outcomes (months)
NCT02481830 (CheckMate 331) Phase 3	Nivolumab Topotecan/amrubicin	N=569 SCLC	mOS*: 7.46 vs 8.38 mPFS: 1.45 vs 3.78
NCT02538666 (CheckMate 451) Phase 3	Maintenance with 1 of: Nivolumab Nivolumab/ipilimumab Placebo	N=834 ES-SCLC ($\geq 2L$) $\geq SD$ after 1L chemo	mOS: 10.41 vs 9.17* vs 9.56* mPFS: 1.87 vs 1.74 vs 1.45
NCT02628067 (KEYNOTE-158) Phase 2	Pembrolizumab	N=107 Recurrent or metastatic SCLC ($\geq 2L$) PD-L1 CPS ≥ 1	ORR*: 35.7% mOS: 14.6 mPFS: 2.1
*Primary endpoint.			

1L, first line; 2L, second line; CPS, combined positive score; ORR, overall response rate; PD-L1, programmed death-ligand 1; SD, stable disease.

Negative Results in Second-Line Treatment of Small-Cell Lung Cancer: Other Agents

Trial Identifier (Name) and Phase	Intervention	Study Details	Outcomes (months)
NCT00182689 (S0435) Phase 2	Sorafenib; platinum sensitive vs refractory	N=83 ES-SCLC	ORR*: 11 vs 2
NCT00470054 Phase 2	Dasatinib	N=44 SCLC Platinum sensitive	PFS at 6 weeks*: 43% mPFS: 5.9 ORR: 0%
NCT02735980 Phase 2	Prexasertib; platinum sensitive vs resistant	N=118 ES-SCLC	ORR*: 5.2% vs 0% mPFS: 1.41 vs 1.36 mOS: 5.42 vs 3.15
*Primary endpoint.			

Comparison of Grade 3/4 Adverse Events With Lurbinectedin vs Topotecan: Data From the Basket and CORAIL Trials

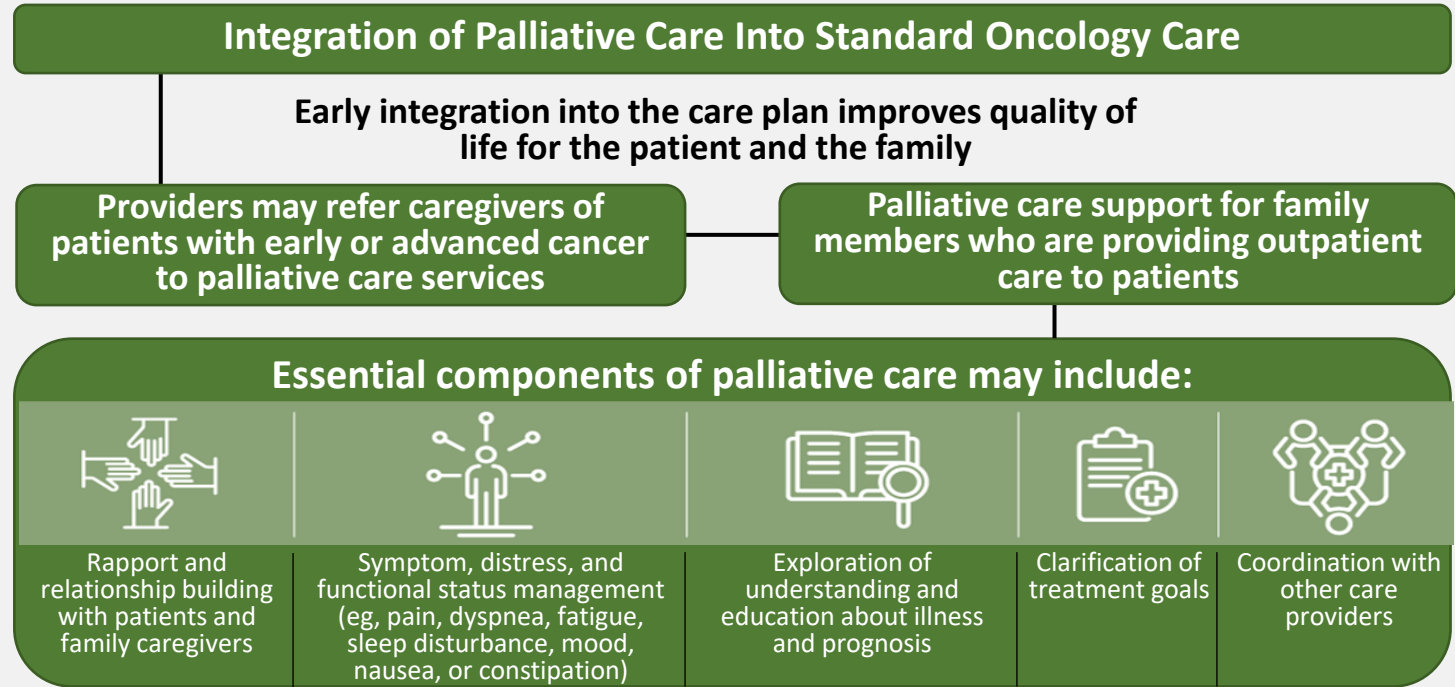
	Lurbinectedin		Topotecan	P value (L vs T)
	Basket* + CORAIL [†]	CORAIL [†]		
Neutropenia	40.6 ^{††}	32.0	78.2	<.0001
Leukopenia	29.6 ^{††}	23.7	57.5	<.0001
Anemia	17.1	17.8	56.3	<.0001
Thrombocytopenia	9.9	9.1	33.3	<.0001
ALT increase	6.9	6.8	3.6	.42
Fatigue	6.7	7.3	13.8	.08
Febrile neutropenia	6.3 ^{††}	5.5	11.5	.08
Nausea	3.2	5.9	4.6	.79
Vomiting	2.9	5.5	3.4	.57
Diarrhea	0.9	0.9	4.6	.06
*Includes patients with SCLC (n=105).				
†Patients with platinum-resistant ovarian cancer.				
††Primary G-CSF prophylaxis not allowed.				

ALT, alanine transaminase; G-CSF, granulocyte colony stimulating factor.

Leary A, Gaillard S, Vergote I, et al. Pooled safety analysis of single-agent lurbinectedin versus topotecan (Results from a randomized phase III trial CORAIL and a phase II basket trial). *J Clin Oncol*. 2020;38(15_suppl):3635.

doi:10.1200/JCO.2020.38.15_suppl.3635

Integration of Palliative Care Into Standard Oncology Care



Balboni TA, Hui KP, Kamal AH. Supportive care in lungc: improving value in the era of modern therapies. *Am Soc Clin Oncol Educ Book*. 2018;38(38):716-725. doi:10.1200/EDBK_201369; Ferrell BR, Temel JS, Temin S, et al. Integration of palliative care into standard oncology care: American Society of Clinical Oncology Clinical Practice Guideline update. *J Clin Oncol*. 2017;35(1):96-112. doi:10.1200/JCO.2016.70.1474; National Consensus Project for Quality Palliative Care. *Clinical Practice Guidelines for Quality Palliative Care, 4th edition*. National Coalition for Hospice and Palliative Care; 2018. <https://www.nationalcoalitionhpc.org/ncp>